

VET Series

Veterinary Ultrasound Diagnostic System



VET-3014



VET-3012



VET-3008



VET-3008P



VET-3009



VET-3003



VET-3011



VET-3006



VET-3002



VET-3007



VET-3005



VET-3009P



VET-3004

EPCC / PRODUCTS / APPLICATION / SOFTWARE / ACCESSORIES / CONSUMABLES / SERVICES

Analytical Technologies Limited

An ISO 9001 Certified Company

www.analyticalgroup.net

►► VET-3014

Modern Trolley Veterinary Ultrasound Diagnostic System

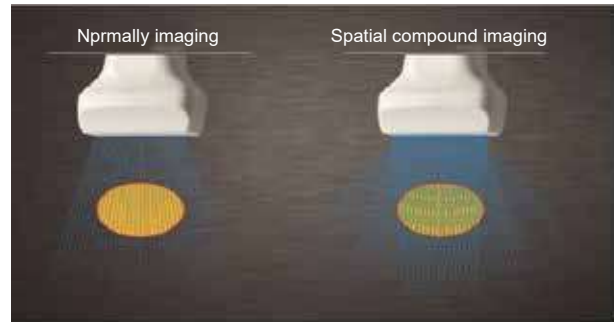
VET-3014 is configured with a new imaging engine, which can significantly optimize imaging performance. It is a comprehensive imaging system engineered to meet today's most demanding needs, from deep abdominal, vascular to superficial small parts.



- | |
|--|
| • Windows Embeadded operation system |
| • 21.5' LED & free arm design
Multi-angle adjustable LED screen meets different clinic demands. |
| • 13.3' LED touch screen
Brings doctors convenient operation and the time of examination is greatly shortened |
| • Stereo audio system |
| • Newly designed ergonomic console
The fully height adjustable control panel enables optional positioning with just one touch |
| • Front and rear handles
Handles on both front and rear make T70 easy to be transported. |
| • 4 Active transducers ports
Improve your flexibility in moving through a wide range of applications |
| • 4G RAM, 120G SSD+ 500G HDD |
| • 4 Wheels with locks
Highly maneuverable, highly mobile four-wheeled platform makes portable exams easy |

►► **Advanced image process technology**
Spatial Compound Imaging

The spatial compound imaging technology uses ultrasound beam deflection to enhance the tissue boundary signals to make the boundaries of the tissue more clear.



►► **THI&FHI Imaging**

THI and FHI increase signal intensity more than 30% compared to traditional signal processing, reducing noise and artifacts, and significantly increasing image resolution.



Normally imaging

Spatial compound imaging

Advanced ultrasonic imaging technology

►► **Tissue Doppler Imaging (TDI)**

The Tissue Doppler Imaging allows you to quantitatively evaluate local myocardial movement and function, with quantitative velocity parameter in TDI mode. Provide convenience for clinicians.

►► **Free hand Elastography**

The differences in tissue responses to pressure are detected and visualized in real-time by the elastography algorithms through different graphical representations, which can be particularly helpful in analyzing breast thyroid and musculoskeletal structures.

►► **Anatomic M Mode**

This advanced cardiac technology features three cursors which can be set at any position and angle simultaneously. Reducing time needed per patient, while maintaining diagnostic precision in addition to the standard cardiac features, acquiring all information even in hard-to-scan situations with difficult heart positioning.



►► VET-3012

High-End Trolley Full Digital Color Doppler Veterinary Ultrasound Diagnostic System



- | |
|---|
| • Enhance sector scan anglet |
| • Trapezoidal imaging |
| • Trssue harmonic imaging technology |
| • Broadband imaging technology |
| • The fowth generabon of space composite imaging tednology |
| • Create sound waves frame by diflarent acoustic directions |
| • Real-timee space maxed Imaging technology (mixed with multiple signal sources for wnanng) |
| • The imageing compound was erase the stain and noise to from a clear image |

- High-end images at your fingertips.
- Based on the new technology platform, safe, stable operation system, capable to deal variety unexpected situations
- High performance, low power machine to guarantee the best perfect image present
- High brightness, high resolution color medical LED display
- High sensitivity large touch screen to make doctors more enjoyable via clinical applications
- Adaptive Speckle Reduction Technology This system may automatically track, identify and intensify useful tissues-characteristic on image. Meanwhile, noise is filtered to increase S/N ratio, enhancing clearer tissue boundary and more obvious image gradation, which is easy for distinguishing early-stage lesion tissues
- Multi-beam Forming Technology This technology can multiply receiving and processing scan lines of images from each element, which largely increases the frame rate of images in B mode and contribute to outstanding animal cardiac performance.
- Trapezoidal Imaging Technology The extended field of view displays more image information without sacrificing image quality, a convenient approach especially for scanning big-size organs.
- Linear Steering Technology By steering the imaging area of linear array, doctor can easily scan flexible organs without moving the probe, thus scanning becomes more efficient and easier

►► Fusion

- Excellent veterinary application
- Enriched veterinary probe type
- Professional veterinary software kits
- Smart veterinary data management system
- Suitable for canine, feline, equine, bovine, swine and other more various veterinary clinical abdomen, chest, heart, endo, small organs, genital examination
- Optional: Convex probe, Linear probe, Micro convex probe, Rectal probe, Phased array probe

✓ E360° rotatable support.

✓ Dual Screen: 19 inch HD LED and 10.4 inch touch screen



►► VET-3011

High-End Portable Full Digital Color Doppler Veterinary\ Ultrasound Diagnostic System

VET 3011 High-end portable color Doppler veterinary ultrasound scanner, which has 15 inch HD LED display, PIP intelligent imaging mode, high capacity Li-ion battery, professional software, dual channel probe port, fantastic shape, it has breakthrough grade chipset technology to ensure image quality.



►► 2D Mode

- 256 level, Grey scale map: ≥ 16 level, visible and adjustable
- Dynamic Range: 20-28dB, visible and adjustable
- Resolution: lateral ≤ 1 mm, vertical ≤ 0.5 mm
- Under B mode, Focus No: 1-6, position adjustable
- STC ≥ 8 , THI: frequency ≥ 31 cm, visible and adjustable
- Cine loop: ≥ 4800 frames
- Adaptive speckle suppression: 0-100 adjustable
- Amplification function: Overall amplification, zoom, amplification, M amplification (dynamic, frozen state can be used to enlarge certain area in the M amplification)

►► Build-in graphics management system

- Editable diagnostic report, embed ultrasound diagnostic image in report, print directly
- Hard disk capacity: 128GB SSD
- Image storage format: ≥ 4 kinds
- Input/Output interface: HDMI, Video, S-Video, WLAN, USB

►► Doppler Mode

- Within PW & CW Function
- Sampling size: 1-20mm, visible and adjustable
- Sampling angle correction: -80°-80°
- Doppler gain: adjustable
- PW Doppler Frequency: ≥ 3 , CW Doppler
- Frequency: ≥ 15
- Real-time automatic Doppler envelope tracing, measure and analysis
- Baseline: Zero shift, classification adjusted

►► Configuration

- Full-Digital 2D Gray Scale.
- 2D & Color Doppler model automatic optimization & adjustable technology
- Tissue Harmonic Imaging (THI)
- Color Doppler Color Flow Mode (CFM)
- Directional Power Doppler Imaging
- Spatial compound imaging
- Trapezoidal imaging
- Real time triplex
- Speckle Reduction Technology
- 15 inch HD LED, display angle adjustable
- Probe port: , both active, one touch switch
- Optional: Convex probe, Linear probe, Micro Convex probe, Rectal probe, Phased array probe

►► Applications

For canine, feline, equine, bovine, ovine and other animals in the clinical abdomen, chest, heart, tendon, small organs, reproductive system, fetal and other examination Large, Middle and small animal's liver, gallbladder, spleen, kidney, bladder, uterus, ovary and other tissues and organs inspection diagnosis of lesions:

Large, Middle and Small animal pregnancy, fetal growth, fetal vitality and fetal position identification and diagnosis.



►► VET-3009P

Economic Trolley Full Digital Color Doppler Veterinary Ultrasound Diagnostic System

It's a excellent Full Digital color Doppler veterinary ultrasound diagnostic system, it has fantastic shape, string functions and also can install touch screen. It can be equipped with the convex, micro convex, linear, rectal and phased array probe, and also install the canine and feline special measure software.

VET-3009P is a veterinary color Doppler ultrasound scanner with comprehensive application.



►► Functional Characteristics

- En/RU/FR/SP/ARB/VN/ID/DE/FA/TH interface support
- Tissue harmonic imaging technology
- Professional veterinary software kits & CW function for cardiac
- Breakthrough chipset technology to ensure frame rate for different types of animal intelligence to take a different transmission and reception methods to ensure image penetration and resolution
- Using advanced algorithms to reach triple effect for enhanced picture quality, the structure and details more vivid
- Automatic speed diagnostic
- Build-in graphic integration workstations, with function of typical lesions cases leading-in
- Scanning mode: Convex/Linea/Micro convex/Rectal/Phased array
- Probe connector: 4
- Ultrasound machine operation system: Windows operation system

• Dynamic rangr:0-160dB, 15level visible & adjustable
• Cine Loop:≥1000 frames
• Smart TGC control:8 segments
• Maximum display depth:≥300mm
• Display magnification:19 kinds display mode, to make the diagnostics more accurately
• Optional: convex, micro convex, linear, rectal, phrased array

360° rotatable bracket come with memory function,the display angle set by your wish



Display 1:
19 inch HD LED



Display 2:
10.4 inch touch
screen(Optional)



►► VET-3008P

Economic Portable Full Digital Color Doppler Veterinary Ultrasound Diagnostic System



►► Professional Clinical Applications

Canine	Feline
Equine	Bovine
Ovine	Feline
Net weight: 6.7KGS, Gross weight: 18KGS	
Machine dimension: 370mm x 360mm x 75mm	
Optional: Convex probe, Linear Probe, Micro Convex probe Rectal probe, Phased array probe	

- Many kinds language support
- Ultrasound scanner operation system: Window operation system
- Display: 15 onch HD LED
- Backlight control panel
- Plentiful storage interface
- Dynamic range:0-160dB
- Built-in High Capacity lithium battery life ≥ 2.5 hours
- One key intelligent optmization: cine loop ≥ 1200 frames, playback continuously or view by frame
- Pre-processing: variable aperture, dynamic apodization, dynamic digital filtering, multi-beam parallel processing technology
- Post-processing:dynamic range,gray scale curve, fame correlation, tissue harmonics, sound power, wall filter, cumulative number,baseline adjustment, sampling frame adjustment, spectrum sampling volume, spectral sampling volume angle, PRF
- Preset conditions: for different organ inspection, preset to optimize the image of the inspection conditions, to reduce the adjustment during operation and preset the external adjustment for common required and combination adjustment
- EN/RU/FR/SP/PT/ARB/VN/ID/DE/FA/TH/interface support

►► Application Range

- VET dedicated software: Expert veterinary preset, measurement and body mark
- Applicable to canine, feline, equine, bovine, ovine and other animals in the clinical abdomen, chest, heart,tendon, smallorgans, reproductive system, fetal and other examination



►► **VET-3009**

**Basic Trolley Full Digital Color Doppler
Veterinary ultrasound Diagnostic Syestem**



- Tissue harmonic imaging technology
- Professional veterinary software kits
- One key intelligent optimization
- Breakthrough chipset technology to ensure frame rate
- EN/RU/FR/SP/PT/ARB/VN/ID/DE/FA/TH interface support
- For different types of animal intelligence to take a different transmission and reception methods to ensure image penetration and resolution
- Using advanced algorithms to reach triple effect for enhanced picture quality, the partial display reaches the quantum level, you can see the structure and details more vivid:
- Probe -wide-band frequency
- Button -quick and easy control
- Wrist support -reduce stress damage
- Display bracket - 360° adjustable
- Probe box - hook type humanized design
- Silicone keyboard - LED backlit

►► Image parameters

• Image optimization: 7 level, visible & adjustable
• Dynamic range: 0-180dB, 15 level visible & adjustable
• Pseudo color: 7 level, visible & adjustable Smoothing image: 7 level, visible & adjustable
• Edge enhancement: 8 levels, visible & adjustable
• Sound power: 0-15 levels, total 16 level visible & adjustable
• Monitor: 17 inch HD LED
• Color filter technology
• Speckle suppression technology
• Multi-angle composite imaging technology
• Multi-beam processing technology
• Optional: Convex probe, Linear probe, Micro convex probe, Rectal probe



►► VET-3008

Basic Portable Full Digital Color Doppler Veterinary ultrasound Diagnostic System



- Net weight: 6.7KGS, Gross weight: 18KGS
- Machine dimension: 370mmx360mmx75mm
- optional: Convex probe, Linear probe, Micro convex probe, Rectal probe

►► Machine parameters

Build-in high capacity Lithium-ion Battery, the endurance power ≥ 2.5 hours
Dynamic range: 0-160dB, 15levels adjustable
Cine Loop: ≥ 1000 frames
Image optimization: Level 7, visible & adjustable
Pseudo color: 8 kinds, visible & adjustable
Smoothing: Level 8, visible & adjustable
Edge enhancement: Level 8, visible & adjustable
Sound power: 0-15 level, total 16 level visible & adjustable

- 15 inch HD LED Display
- One key smart optimization
- Keyboard design: easy and quick access
- Integrated clipboard: display the saved image in the bottom of the screen, it can call out or delete directly
- Ultrasound scanner operation system: Windows system
- Preset condition: for different organ inspection, preset to optimize the image of the inspection conditions, to reduce the adjustment during operation, and preset the external adjustment for common required and combination adjustment
- EN/RU/FR/SP/PT/ARB/VN/ID/DE/FA/TH interface support



►► VET-3007

High Elements Trolley Full Digital Veterinary ultrasound Diagnostic System



- Special Design for Veterinary
- Display: 15Inch LCD, Angle view adjustment more flexible
- Backlit silicone keyboard, more comfortable and wearable, no more worry whrn use in dark room:
- Probe interface:3
- EN/RU/FR/SP/PT/ ineterface support
- Display magnification: 16 kinds of display mode, more accurate diagnosis of lesions. x0.8, x1.0 can enhance the depth of the display
- Adaptive Speckle Reduction technology: The system may automatically track, identify and intensify useful tissues-characteristic information, Meanwhile, noise is filtered to increase S/N ratio, enabling clearer tissue boundary and more obvious image gradation, which is easy for distinguishing early-stage lesion tissues.
- Multi-beam Forming technology: This technology can multiply receiving and processing scan lines of images from each element, which can largely increase the frame rate
- Net Weight: 26.6KGS, Gross Weight: 40.6KGS,
- Machine dimension: 740x520x1310mm
- Optional: Convex probe, Linear Probe, Micro convex probe, Rectal probe, Backfat probe

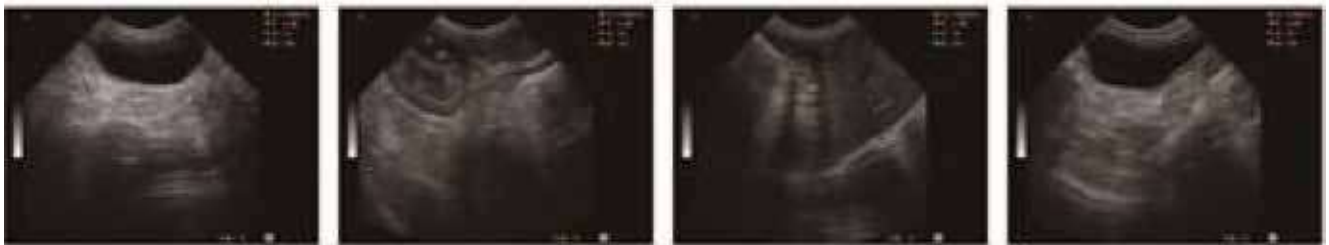


►► Scope of Application

Middle and Small animal pregnancy, fetal growth, fetal vitality and fetal position identification and diagnosis

Middle and Small animals, liver, gallbladder, spleen, kidney, bladder and other tissues and organs inspection and diagnosis of lesions:

Uterus, ovary these reproductive system diagnosis of lesions



►► **VET-3003**

High Elements Portable Full Digital Veterinary Ultrasound Diagnostic System



- High elements probe, high definition, more function laptop type veterinary ultrasound diagnostic scanner
- Compact and lightweight, clear image, easy operate, powerful endurance
- Variety charging methods to guarantee the inspection of doctor consultation under different environments
- High Speed USB Port support High-capacity USB disk and support the color printer out all kinds of image and report which make the output of diagnostics more convenient and simple
- Backlit silicone keyboard, photoelectric trackball and encoder, easy operate
- Dual probes socket(Optional)

►► Main configuration

Display: 12.1 inch medical LCD	
Scanning mode: Convex/Linear/Micro Convex/Rectal	
Maximum detect depth: 307mm	
THI and Histogram function	Main gain: 0-100%
Smart TGC control: 8 segments	E-focus:4
Image Storage: 4920 Images	Pseudo color: 8 kinds
Scanning area(angle): 3 levels	Edge enhancement: 0-3
Linear correlation: 0-5	Dynamic range: 0-135db
Cine loop: 512 frames	Body mark: 97 kinds
probe connector: 1, with automatic identification function to support variety of probes to work	
frequency: support high-frequency probe, with 2.5MHZ, 3.5MHZ, 4.5MHZ, 5.5MHZ, 6.5MHZ, 7.5MHZ, 8.5MHZ frequency	
Long endurance battery: 5-7 hours endurance power	
Net weight: 4.7KGS, Gross Weight: 9.5KGS.	
Machine dimension: 47x22x40mm	
Optional: Convex probe, Linear probe, Micro convex probe, Rectal probe, Backfat probe	
EN/RU/FR/SP/PT interface support	

►► Applicable scope

- OB measurement: GA and EDD for Bovine, Equine, Ovine, Canine, Feline, Goat, Swine and Llama
- Poultry muscle thickness, area determination, uterus, ovarian and other reproductive system disease diagnosis
- Pregnancy, fetal development, fetal viability and male/female identification:
- Variety of animal breast body tumor, abscess and hematoma examination

►► **VET-3004**

Middle Elements Trolley Full Digital Veterinary Ultrasound Diagnostic System



►► **Scope of Application:**

Middle and Small animal pregnancy, fetal growth, fetal vitality and fetal position identification and diagnosis.
--

Middle and Small animals, liver, gallbladder, spleen, kidney, bladder and other tissues and organs inspection and diagnosis of lesions:

Uterus, ovary these reproductive system diagnosis of lesions
--

- Special Design for veterinary
- Display: 15 inch LCD Medical monitor, Angle view adjustment more flexible
- Backlit silicone keyboard, more comfortable and wearable, no more worry when use in dark room:
- Probe interface:2
- Display magnification: 16 kinds of display mode, more accurate diagnosis of lesions, x0.8 x1.0 can enhance the depth of the display
- Adaptive Speckle Reduciton technology: The system may automatically track, identify and intensify Useful tissues-characteristic information. Meanwhile, noise is filtered to increase S/N ratio, enabling clearer tissue boundary and more obvious image gradation, which is easy for distinguishing early- stage lesion tissues.
- Multi-beam Forming technology: This technology can multiply receiving and processing scan lines of images from each element, which can largely increase the frame rate
- Net Weight: 26.6KGS, Gross Weight: 40.6KGS,
- Machine dimension: 740x520x1310mm
- Optional: Convex probe, Linear probe, Micro convex probe, Rectal probe, Backfat probe
- EN/RU/FR/SP/PT interface support



Special Design for
veterinary



Display: 15 inch LCD
Medical monitor,
Angle view
adjustment more
flexible



Backlit silicone
keyboard, more
comfortable and
wearable, no more
worry when use in dark room:



►► **VET-3002**

Middle Elements Portable Full Digital Veterinary Ultrasound Diagnostic System



- First-class digital imaging technology, clearer image
- Full and rich graphic information processing functions
- Very good image: left and right flip, black and white flip, up and down flip
- Long time cine loop, image automatic cycle playing
- External USB storage, more convenient for image upload
- Compact size, clear image, easy operation, strong endurance
- Dual probes socket(Optional)

►► Main configuration

- 12.1 inch LCD display convenient and flexible
- Backlit silicone keyboard, easy to operate in dark room
- Dynamic range: 0.120dB, adjustable
- Cine Loop: 256 frames
- Detect depth: 240mm
- Image storage: 127 images
- Pseudo color: 16 kinds
- OB-GYN: BPD, CRL, GS, FL, HC, AC
- High capacity Lithium-ion battery: 4-8 hours
- Net weight: 4.3KGS, Gross Weight: 8KGS,
- Machine Dimension: 47x22x40mm
- Optional: Convex probe, Linear probe, Micro convex probe, Rectal probe, Backfat probe
- EN/RU/FR/SP/PT interface support

►► Scope of Application:

- Middle and Small animal pregnancy. fetal growth. fetal vitality and fetal position identification and diagnosis
- Middle and Small animals, liver, gallbladder, spleen, kidney, bladder, uterus and other tissues and organs inspection and diagnosis of lesions:
- Uterus, ovary these reprofuctive system diagnosis of lesions

►► VET-3006

HIGH-END ANIMAL FARM Palm Full Digital Veterinary Ultrasound Diagnostic System

VET-3006 full-Digital ultrasound diagnosis System is new production of Xuzhou DaWei electronic Equipment co. Ltd. which was resource from latest digital system structure. it can supply excellent 2D image, and because PALM more compact and convenient features to make it play a greater role in the field of veterinary if compare with traditional trolley and portable ultrasound production, this Veterinary PALM ultrasound scanner suitable for Cattle, sheep, horse, swine, cat, dog and other animals



Compact/ Exquisite
/ Portable



5.6 inch LCD HD
display



Large capacity
Lithium-ion battery

Leading digital beam former technology.

CNC Dynamic Frequency Scanning Technology

Real-time point-by-point dynamic acceptance focus technology
--

Real-time dynamic aperture imaging

- Powerful System Functions
- HD video playback
- Image storage function
- Parameters optimization and pre-set function
- Function of screen protection to extend equipment life effectively
- Scope of Application
- Large, Middle and Small animal pregnancy, fetal growth, fetal vitality and fetal position identification and diagnosis
- Large, Middle and Small animals, liver, gallbladder, spleen, kidney, bladder, uterus, ovary and other trissues and organs inspection and diagnosis of lesions:
- Bovine, Sheep, Equine, Swine and other large animal back fat thickness measurement

- ✓ Excellent Human-Computer Ineraction
- ✓ Comfortable hand-held imaging, ultra-light weight, easy to carry
- ✓ High-resolution LCD display to improve diagnostic accuracy
- ✓ USB, TF card ports for convenient and fast image storage and playback
- ✓ Integrated long life lithium battery ensure long power outages check, AC and DC dual-use
- ✓ Real-time dynamic beam apodization
- ✓ Fast of keyboard operation / Convenient / Flexible
- ✓ Various of pseudo color display
- ✓ Simple and beautiful operation panel



►► VET-3005

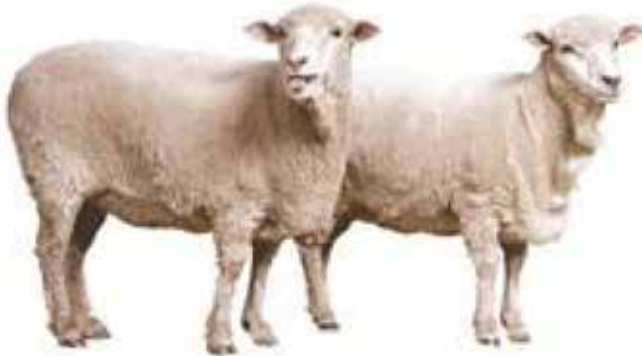
Economical ANIMAL FARM Palm Full Digital Veterinary Ultrasound Diagnostic System

VET-3005 is the application of computer control and digital sweep converter(DSC), broad-band low noise Pressure control amplifier, digital logarithmic compression, digital dynamic filtering, frame correlation processing, edge enhancement technology to make the machine image clearer and high resolution. Compact and portable PALM ultrasound scanner, built-in battery, waterproof probe, user friendly and the diagnosis is accurate.



• Technology parameters: mechanical sector scan
• Power consumption: 13W when working in non-charging state)/25W When working in charging state
• Depth: 46-208mm, adjustable
• Machine dimension: 228x137x49mm
• Frame frequency: 30 frames/second
• Machine weight: 800G
• Measurement: distance, perimeter, area, gestational age, etc,
• Standard configuration: machine (including one lithium-ion battery) 8G TF memory card 3.5MHz waterproof mechanical sector scan probe Operation manual Adapter
• Optional: Extra lithium-ion battery Adapter for car External vharger

- Compact, portable and user-friendly
- Continuously working 4-5 hours: Large capacity pluggable mobile rechargeable lithium-ion battery with imported high capacity battery.
- Power protection function can extend battery life.
- Winter mode: One key to start the winter mode. the probe can be used directly without waiting for warm-up winter mode
- The image more delicate: 15 levels images pre-processing
- Applications: Detect pregnancy, Estimate fetal quantities, Diagnose disease. Fetal Vitality evaluation, Fetal heart beats.
- Applicable to: cattle, horse, sheep, pigs, cat and dog pregnancy diagnosis (integration of six common animal gestational age measurement data kits)
- Feasible scope : large-scale animal farms, artificial insemination station, feed/ veterinary drug distributors and business, research and teaching units
- Support 2.5 /3.0/3.5/5.0MHZ four kinds frequency 15 kinds Magnifications, 5.6 inch LCD, Mini USB port. TF card slot.



- ✓ Image storage: The machine has TF card and USB port, the image can be stored in TF card directly, unlimited expansion for storage.
- ✓ Stored data can be copied, so the image quantity has no limited by the unlimited storage,
- ✓ You can recall the stored image on the TF card byframe or continuously frame,
- ✓ Hand-held design, set a variety of patented technology in one, small size, 8 kinds pseudo color image display
- ✓ Light weight, easy carry, user friendly,
- ✓ Tact touch-button, button position reasonable and operation easily.

Regulatory compliances



Corporate Social Responsibility

Analytical Foundation is a nonprofit organization (NGO) found for the purpose of:



Analytical
Foundation

1. Research & Innovation Scientist's awards/QC Professional Award : Quality life is possible by innovation only and the innovation is possible by research only, hence ANALYTICAL FOUNDATION is committed to identify such personalities for their contributions across various field of Science and Technology and awarding them yearly. To participate for award, send us your details of research / testing / publication at Info@analyticalfoundation.org

2. Improving quality of life by offering YOGA Training courses, Work shops/Seminars etc.

3. ANALYTICAL FOUNDATION aims to DETOXYFY human minds,souls and body by means of yoga, Meditation, Ayurveda, Health Care, Awards, Media, Events, Camps etc.

Reach us @



 **Analytical**®
Technologies Limited

HPLC Solutions MultipleLabs Analytical Bio-Med Analytical Distributors Analytical Foundation (Trust)

Corporate & Regd. Office:
Analytical House, # E67 & E68,
Ravi Park, Vasna Road, Baroda,
Gujarat 390 015. INDIA

T: +91 265 2253620
+91 265 2252839
+91 265 2252370
F: +91 265 2254395

E: info@hplctechnologies.com
info@multiplelabs.com
info@analyticalgroup.net
info@analyticalbiomed.com

W. www.analyticalgroup.net
www.hplctechnologies.com
www.multiplelabs.com
www.ais-india.com

Sales & Support Offices:
across the country :
Distributors & Channel
partners World Wide